

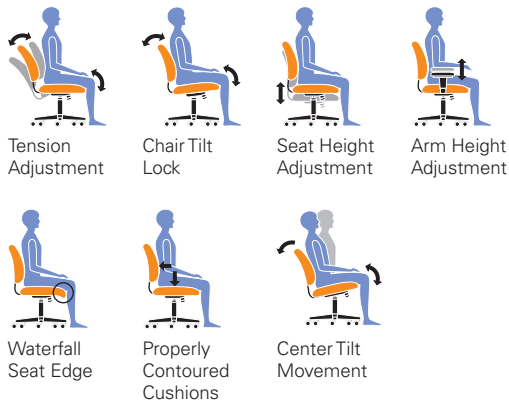
▶ OTG11860



Black mesh back with patterned Black fabric seat • Pneumatic seat height adjustment • Height adjustable arms with sliding arm caps • Single position tilt lock with tilt tension adjustment • Scuff resistant high rise molded base with twin wheel carpet casters • Soft casters (OTG10700) are available • Greenguard certified • UPSable

Overall Dimensions: 25W x 23.5D x 33.5H  
 Seat Height: 15.5" - 20.5"  
 Seat Width: 20"  
 Seat Depth: 17.5"  
 Back Width: 18.5"  
 Back Height: 18"  
 Arm Height: 7"

List price **\$430** **T**



In addition to QL10 Black, this chair (seat only) can be upholstered in fabrics shown below at no additional cost. Other fabric choices are available at a \$55 list upcharge.



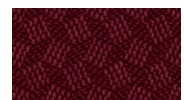
QL10 Black - STOCKED



QL11 Charcoal Grey



QL14 Navy



QL16 Wine



Offices To Go® - USA

17 West Stow Road PO Box 562 Marlton, New Jersey USA 08053 T 856.596.3390 800.220.1900 F 856.596.5684

Visit us at [www.officestogousa.com](http://www.officestogousa.com)

A Division of the Global Furniture Group [www.globalfurnituregroup.com](http://www.globalfurnituregroup.com)